

MADE BY
JAMA



**DESIGNED
TO PERFORM**



LASER STEALTH EXHAUST SYSTEMS BY JAMA ENGINEERING BY

RACING EXPERIENCE...



TEAM CELANI
WORLD CHAMPIONSHIP
SUPERBIKE & SUPERSTOCK 1000



TEAM GMT94
WORLD CHAMPIONSHIP
SUPERBIKE & ENDURANCE

FOR STREET USE

CUTTING EDGE DESIGN

The LASER Stealth exhaust is the direct result of the latest technology in computer designing and sound engineering.

The unique shape of the LASER Stealth exhaust, that transforms from the round entry cap to the specific rectangular endcap, makes the design stand out from the competition.

Tested on the racetrack by world's leading race teams at all levels of competition, the muffler is now available for (E-homologated) street applications!

This "Edgy" exhaust is not only available in a light-weight full carbon version, but also in popular priced stainless steel (Inox) varieties.



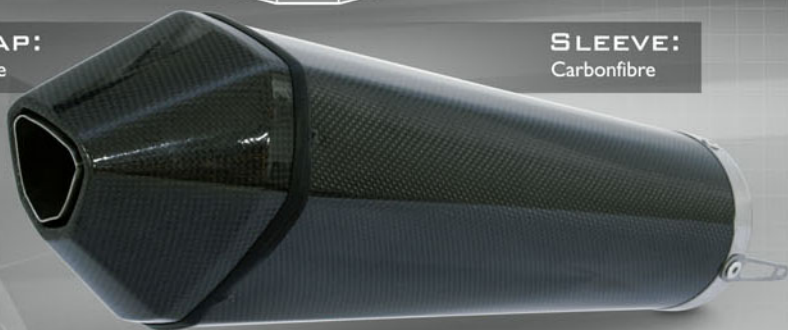
LASER
STEALTH

STEALTH STYLES

LASER
STEALTH

ENDCAP:
Carbonfibre

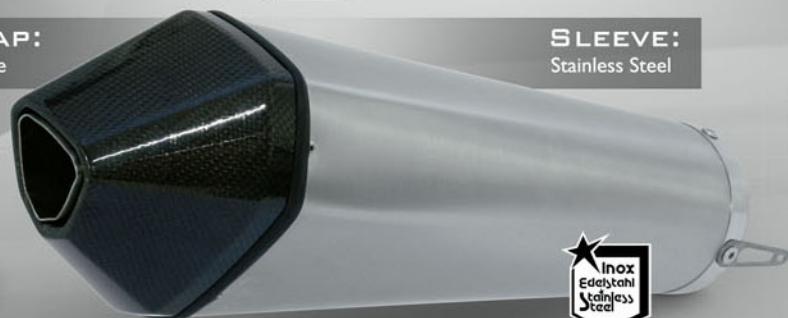
SLEEVE:
Carbonfibre



LASER
STEALTH

ENDCAP:
Carbonfibre

SLEEVE:
Stainless Steel



LASER
STEALTH

ENDCAP:
Stainless Steel

SLEEVE:
Stainless Steel



STEALTH APPLICATIONS

(For more applications check: www.laserexhausts.com)

HONDA CB600F HORNET '07
LASER STEALTH



SUZUKI GSX-R1000 '07
LASER STEALTH



YAMAHA YZF-R1 '07
LASER STEALTH



- OUTSTANDING DESIGN
- OPTIMUM PERFORMANCE
- LIGHT WEIGHT
- HIGH TECH MATERIALS
- FINEST SOUND



LASER
STEALTH

JAMA Engineering BV
Boonsweg 85

3274 LH Heinenoord
the Netherlands

Tel.: +31(0)186646464
Fax: +31(0)186646400

www.laserexhausts.com